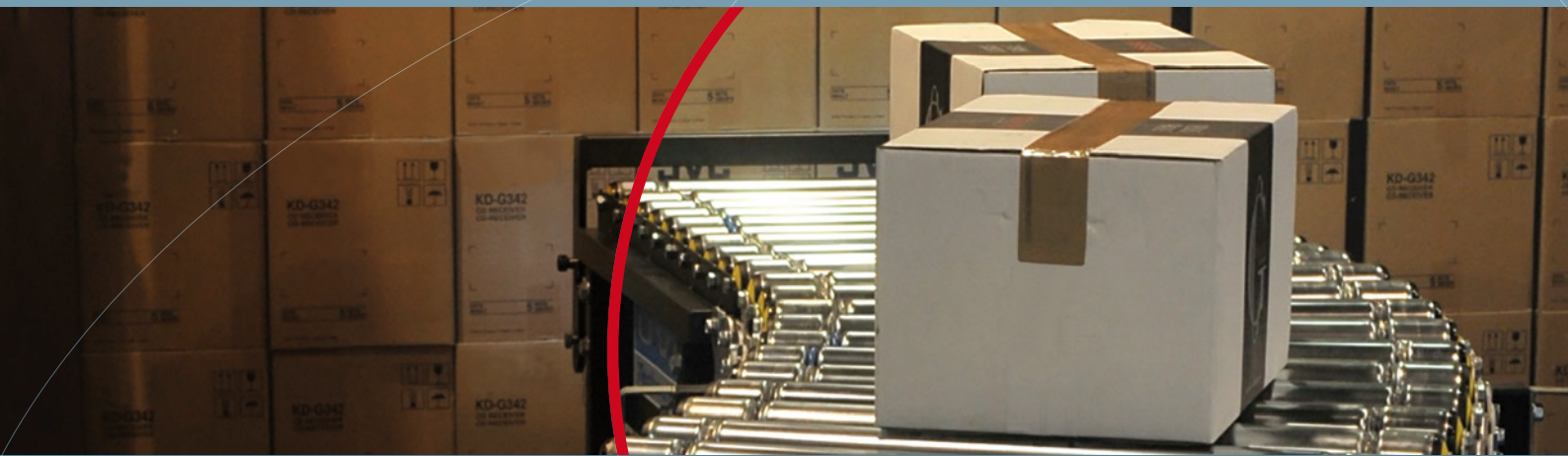


SONCEBOZ
from mind to motion



Motion systems

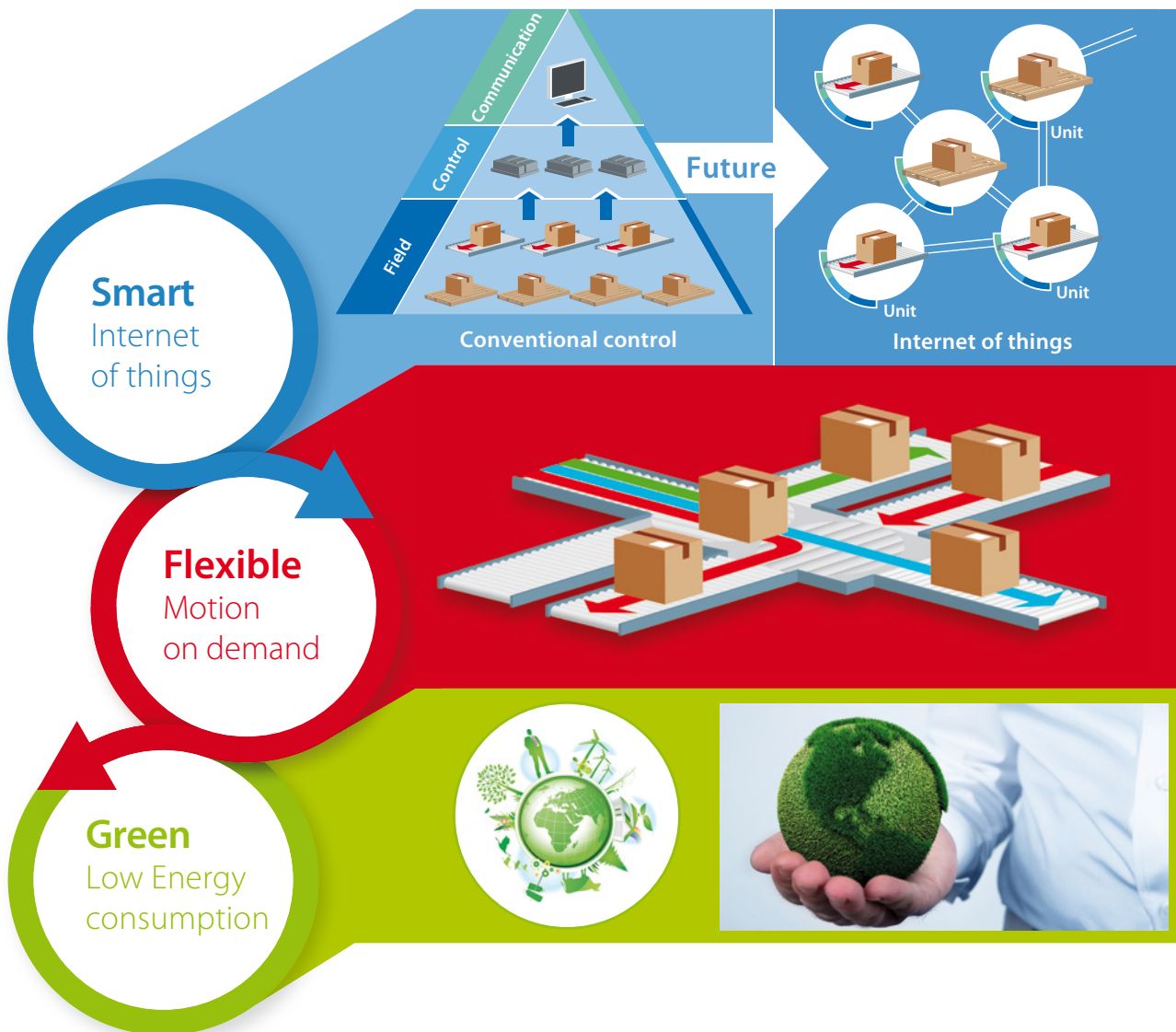
for challenging **intralogistics** applications

Challenges in intralogistics

The industry is in front of a paradigm change called the Internet of things. It introduces modular and flexible control systems including drives, sensors and data communication. To make the material flow control and the handling modules flexible, traditional fixed conveyor systems with hierarchical control will be replaced by flexible logistic units that can perform autonomous and cooperative functions.

The demand for flexibility and robustness will increase the dynamics in intralogistic systems. This leads to system architectures in form of a network rather than a hierarchical system. More and always changing material movements will be performed according to the increasingly flexibility demand of the supply chain.

According to the overall trends in technology, ecological aspects have also grown in importance in intralogistics. Energy efficiency is at the heart of the EU's Europe 2020 strategy for smart and sustainable growth and of the transition to a resource efficient economy. Intelligent control of actuators and drives has to contribute to the reduction of energy consumption.



Our solutions

Smart and integrated driver & control

Integrated control and driver electronics with communication interfaces and I/O into the motors allows autonomous and collaborative function. Thus LoadSense drives represent a key module for new functionalities according to the requirements of internet of things.

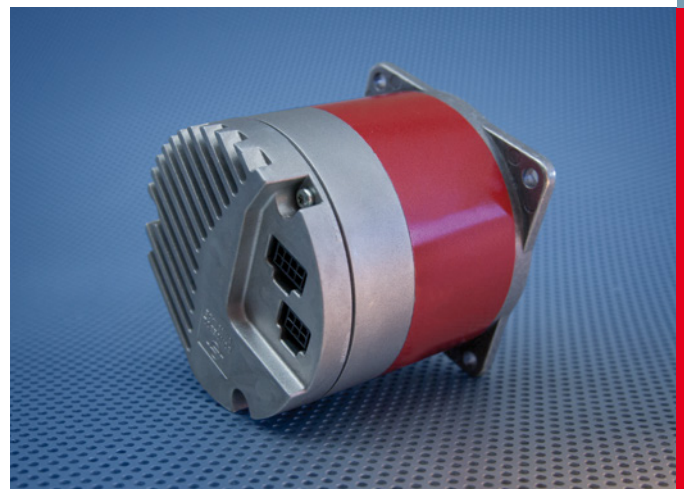
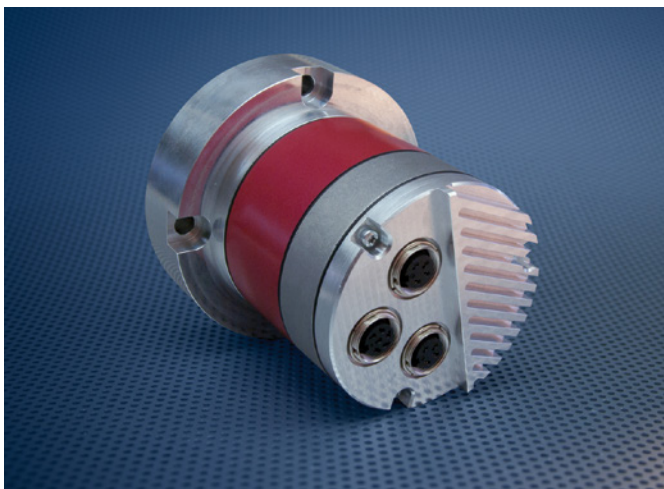
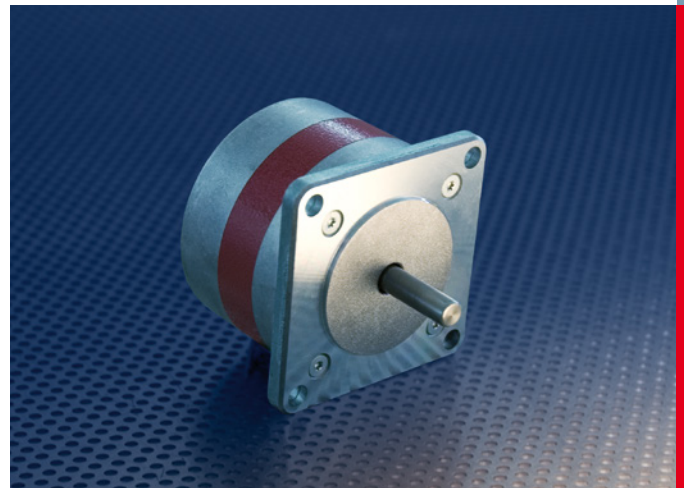
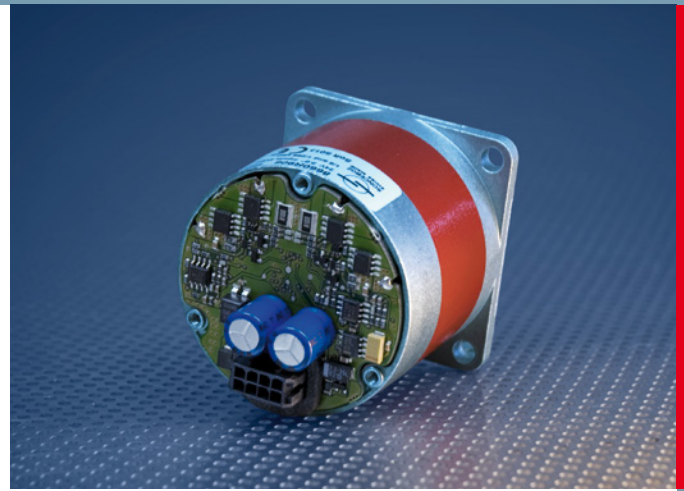
Gearless direct drives

A complete range gearless direct drive helps to fulfill the requirements of flexible intralogistic system with highly cyclic functions. A torque range of 0.5 up to 8Nm direct on the motor shaft allows avoiding mechanical gears which may be sensitive to ongoing start-stop function and high acceleration moments.

The high protection degree of IP65 and a wide temperature range from -40 to +85°C make in- and out-door application possible.

Power only when demanded

The LoadSense technology measures constantly the load of the motor and therefore only the necessary current to overcome the instantaneous load is consumed. Thus overall consumption and heat dissipation is reduced.



Your benefits

- *No additional driver and control system required*
- *No gear for high life time*
- *Suitable for cyclic stop-and-go and backward / forward movements*
- *Made for In- and Outdoor applications*
- *Low energy consumption thanks to LoadSense current control*



SONCEBOZ

Motion systems

Our core competencies consist of design, development and production of **mechatronic drive systems** and **electric motors** that operate in **harsh environments**.

We are committed to improving safety, decreasing energy consumption and minimizing the impact on the environment. Our focus on **innovation, best in class quality** and **exceptional service** is our key to success for worldwide OEM customers and their suppliers.

Your contact for Intralogistic Solutions
info@sonceboz.com

SONCEBOZ
2605 Sonceboz - Switzerland
Tel. +41 (0)32 488 11 11
Fax +41 (0)32 488 11 00

www.sonceboz.com

