

# Hybrid stepper motors

**6630-24**

- Step angle..... 1.8°
- Diameter ..... 86 mm
- Weight ..... 1500 g
- Holding torque ... 2.75 Nm

The hybrid stepper motor comes into its own where torque at low speed, positioning, and accuracy are determining factors.

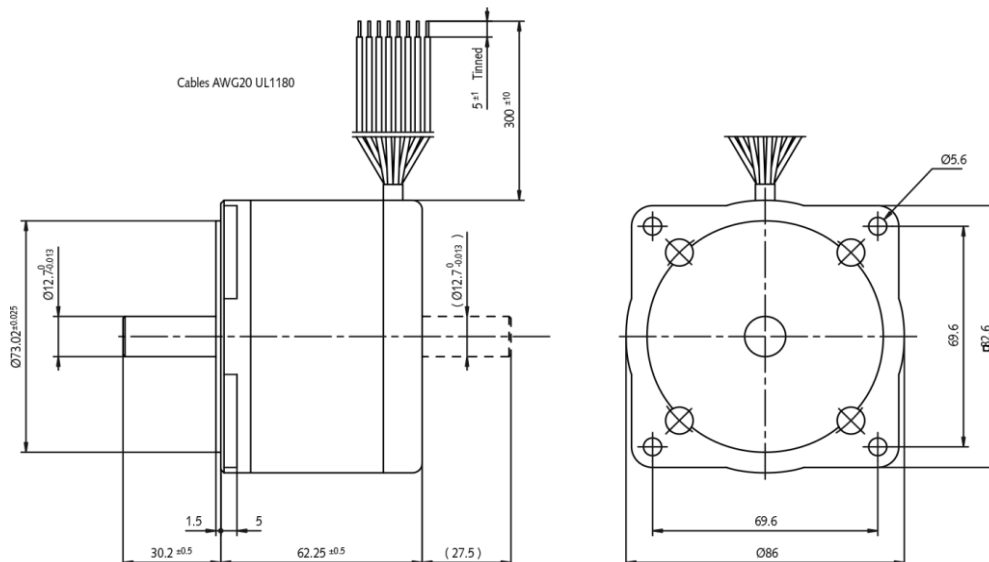
## ► Technical data

	Part N°	Phase resistance [Ω]	Phase inductance [mH]	Phase current [A]	Holding torque [mNm]	Nominal power [W]
Phases in parallel	6630-24-4-0.4	0.2	1.2	6.8	2.75	18.5
	6630-24-4-1.8	0.9	4.6	3.2	2.75	18.5
Phases in series	6630-24-4-0.4	0.8	4.8	3.4	2.75	18.5
	6630-24-4-1.8	3.6	18.4	1.6	2.75	18.5

Steps/rev.	<b>200</b>
Step accuracy	<b>± 5%</b>
Rotor inertia	<b>1390 gcm<sup>2</sup></b>
Insulation class	<b>B 130 °C</b>
Protection	<b>DIN 40050 IP 30</b>
Test voltage	<b>500 VAC</b>
Detent torque	<b>120 mNm</b>

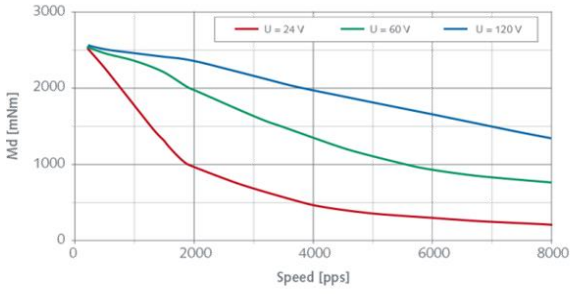
## ► Dimensions

Drawing not to scale. All dimensions in mm.

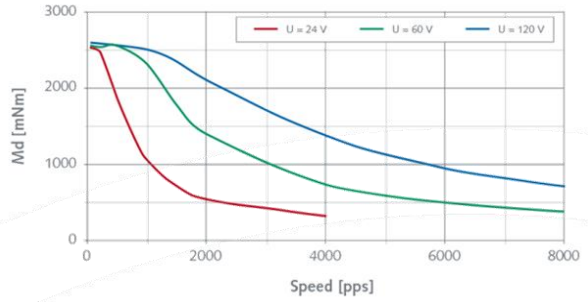


► Dynamic characteristics

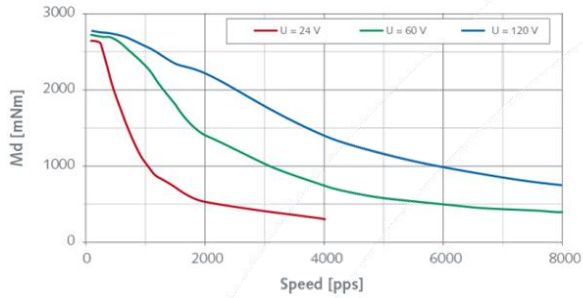
• 6630-24-4-0.4 ► Phases in parallel



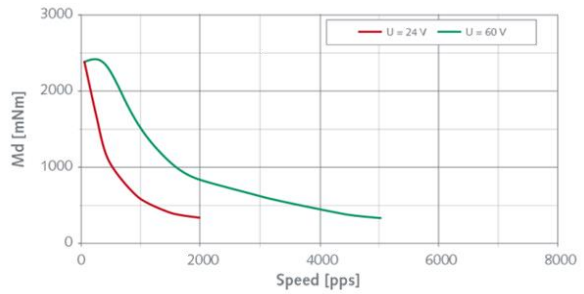
• 6630-24-4-1.8 ► Phases in parallel



• 6630-24-4-0.4 ► Phases in series



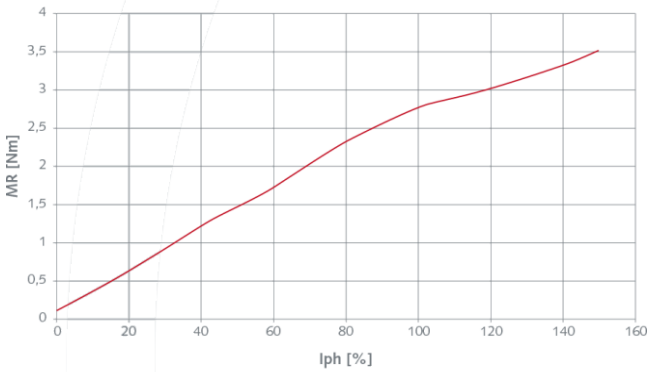
• 6630-24-4-1.8 ► Phases in series



[pps] = pulses per second

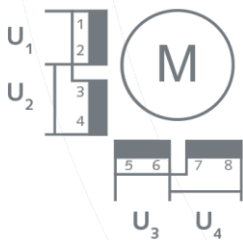
► Static characteristics

• 6630-24-4 Series

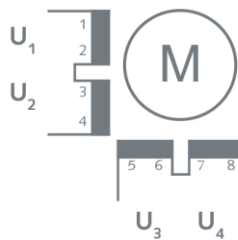


► Electrical Interface

► Phases in parallel



► Phases in series



- U<sub>1</sub> 1 green  
2 orange
- U<sub>2</sub> 3 black-white  
4 green-white
- U<sub>3</sub> 5 red  
6 black
- U<sub>4</sub> 7 white  
8 red-white

Special requirements upon customer specifications. Right to change reserved.

<2.0>

SONCEBOZ SA

2605 Sonceboz – Switzerland

Tel. +41(0) 32 488 11 11

Fax +41(0) 32 488 11 00

info@sonceboz.com - www.sonceboz.com

